



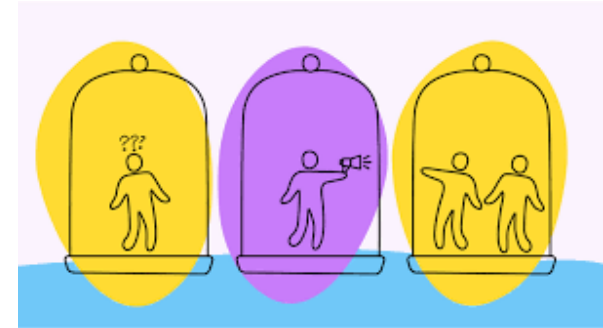
MSBO ISD Committee Meeting November 17, 2022

- Scott Hutchins, School Mental Health and Medicaid Consultant
- HutchinsS1@michigan.gov
- 517-241-7099



Breaking Down Silos

- Behavioral health systems have traditionally been siloed, making it extremely difficult to provide consistent high-level behavioral health care for children.
- Through collaboration and partnerships with key stakeholders across Michigan and State School Aid Act funds, we are creating a collaborative solution that connects students to behavioral health services that meet their needs.



Shift in Mindset from Hardening Schools to Investing in School-Based Behavioral Health Solutions



- In response to the violence occurring in schools across America, Michigan legislators started having conversations in 2018 about the hardening of schools.
- Those conversations eventually led to a different solution as they realized there was no funding for children's mental health in schools and we needed to address the needs of students that were hurting themselves or others.

State School Aid Act Funding (Public Act 94 of 1979)

- We are building a system of support for children that began with around \$30 million, or roughly \$20 per student, when funding was added to the State School Aid Act in Fiscal Year 2018-19.
- At the same time, Michigan amended our Medicaid State Plan to expand coverage to include reimbursement for all Medicaid-eligible students receiving behavioral health and support services, not just students with an Individualized Education Program or Individualized Family Service Plan. This expansion is called Caring4Students (C4S).
- Since that first year of funding, we have continued to see significant investment from the legislators and governor. The COVID pandemic, political and social unrest across the country, and violent tragedy in Oxford, Michigan in November 2021 have only exacerbated the mental health needs of our students.



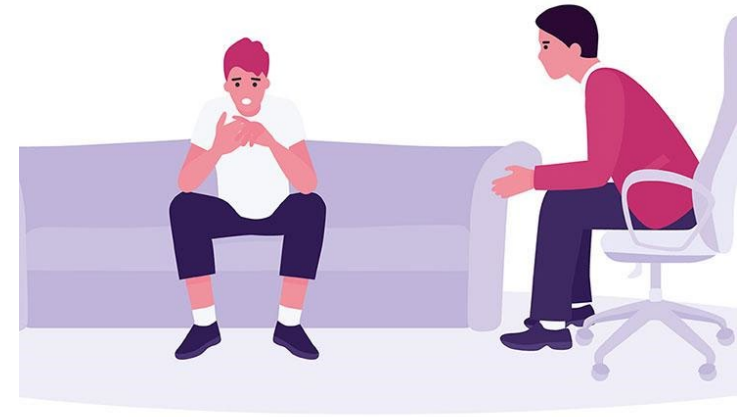


Previously Funded and Continued Opportunities

- Sec. 31n = \$77,600,000
 - Funding to ISDs for direct service providers with Medicaid match, Child and Adolescent Health Centers with mental health focus (E3), and technology
- Sec. 31o = \$240,000,000
 - Funding to ISDs and public districts for direct service providers (nurses, social workers, psychologists, counselors) with 100% in year 1, 66% in year 2, 33% in year 3
- Sec. 31p = \$50,000,000
 - Funding to ISDs for TRAILS

Hiring Providers to Serve Students

- In the past 2 years, Sections 31n and 31o of the State School Aid Act allocated over \$370 million to intermediate school districts and local school districts to hire behavioral health professionals.
- We don't have enough requisite staff to hire with the funds so there are still significant needs of children and staff in schools that are not being met.
- We're working with our Labor and Economic Opportunity state department on a process called Talent Pipeline Management (TPM), a long-term solution to encourage individuals to become behavioral health professionals. Our partners include community mental health, hospitals, child and adolescent health centers, plus colleges and universities.





Technical Assistance for School-based Behavioral Health Providers



Trainings and collaboration opportunities for **Direct Service Providers** every other month



Trainings and collaboration opportunities for **Implementers and Coordinators** every other month



Consultants are available to meet with LEAs and ISDs plus their team members as needed



Newsletters 3x/year



Shared Google drive with vetted resources and support documents



Email list to distribute vetted behavioral health resources and information



New Funding, New Opportunities

- Sec. 31q = \$2,000,000 Discover You
- **Sec. 31aa = \$150,000,000 for mental health support**
- Sec. 31ee = \$500,000 Detroit Horse Power (SEL)
- **Sec. 97 = \$168,000,000 for school safety**
- Sec 97b = \$25,000,000 to MSP for school resource officers
- **Sec. 97c (supplemental) = \$10,000,000 safety assessments (\$2,000/building)***
- **Sec. 97d (supplemental) = \$12,500,000 critical incident mapping***
- Sec. 97e = \$2,000,000 school mental health and safety commission
- Sec. 97f = \$15,000,000 to MSU for cross system intervention



Section 31aa

Provides per pupil funding to public districts and Intermediate School Districts (ISDs) for activities to improve student mental health.

1. The allowable expenditures of funds include the following:

- Hiring or contracting for support staff for student mental health needs, including, but not limited to, school psychologists, social workers, counselors, and school nurses
- Purchasing and implementing mental health screening tools
- Providing school-based mental health personnel access to consultation with behavioral health clinicians to respond to complex student mental health needs (MC3)
- Any other mental health services or product necessary to improve or maintain the mental health of students and staff

2. Applicants must use community input to guide the expenditure of the funds and shall pledge to host at least 1 community conversation about student mental health and school safety.



Section 97

Per pupil funding calculation

Allowable expenditures of funds allocated under this section include:

1. Coordination with local law enforcement.
2. Training for school staff on threat assessment.
3. Training for school staff and students on threat response.
4. Training for school staff on crisis communication.
5. Safety infrastructure, including, but not limited to, cameras, door blocks, hardened vestibules, window screening, and technology necessary to operate buzzer systems. This may also include firearm detection software that integrates to existing security cameras to detect and alert school personnel and first responders to visible firearms on school property. The software described in the immediately preceding sentence must be organically developed and proprietary to the company it is purchased from and should not include any third-party or open-source data.
6. Age-appropriate training for students and families on responsible gun ownership.
7. Providing professional development to school resource officers that includes training on the best practices for serving in a school setting.
8. Any other school safety service or product necessary to improve or maintain security



Section 97c (supplemental)

Up to \$2,000 for each school building to contract with a vendor for the completion of comprehensive safety and security assessments

1. Has a well-developed process for assessing safety and security in schools including:
 - An assessment of physical security, policies, and procedures related to school safety and security
 - A method for assessment of the process
2. Provides actionable recommendations that are documented
3. Provides a description of the process, including costs
4. Has a history of assessing K to 12 schools
5. Can provide examples of findings reports with comprehensive reviews of all elements of safety and security that include reviews of board policies, emergency operations plans, environment, exterior and interior, policy and procedures, and training and equipment
6. Can provide ongoing assistance, including, but not limited to, board presentations, community presentations, and consulting, to assist in the implementation of any recommendations made in any findings reports and the fees associated
7. Can provide basic qualifications for any assessors that will complete assessments, including, but not limited to:
 - Education
 - Work history
 - Experience in assessing K to 12 schools
8. If contracting with subcontractors, ensures that the subcontractors have experience in safety and security or law enforcement for the provision of services
9. If contracting with subcontractors, ensures that the subcontractors have familiarity with MDE's school safety guidelines
10. Has experience in assessing safety and security in programs and facilities used outside of the school day, including, but not limited to, athletic facilities and programs
11. Has experience in assessing safety and security in facilities and programs with specialized needs, including, but not limited to, early-childhood-education facilities, special-needs facilities, community-education programs, and adult-education programs
12. Operates in the best interest of the district without any external vendor influence
13. Does not do any of the following:
 - Represent companies that sell safety and security products
 - Accept referral fees for recommending products
 - Accept or solicit referral fees, or operate on behalf of, any equipment or technology vendors



Section 97d (supplemental)

Critical incident mapping uses satellite imaging to create a real-life depiction of a building with labels for important areas like the cafeteria or gymnasium. A grid is placed over the map to help first responders communicate more accurately.

The critical incidence mapping:

1. Must be compatible with platforms and applications used by local, state, and federal public safety officials.
2. Must not require the purchase of additional software for use.
3. Must be provided in a printable format.
4. Must be verified for accuracy through a walk-through of a school building and school grounds.
5. Must be oriented true north.
6. Must include accurate floor plans overlaid on or current aerial imagery of a school building or school plan.
7. Must include site-specific labeling that matches the structure of the school building, including room labels, hallway names, external door or stairwell numbers, locations of hazards, key utility locations, key boxes, automated external defibrillators, and trauma kits.
8. Must include site-specific labeling that matches the school grounds, including parking areas, athletic fields, surrounding roads, and neighboring properties.
9. Must include a gridded overlay with x/y coordinates.
10. Must include information that best assists first responders in an emergency, including, but not limited to, the following information:
 - Building numbers.
 - Floors.
 - Suite designations.
 - Room numbers.
 - Other available relevant location information for each school.



Senate Bill 1012

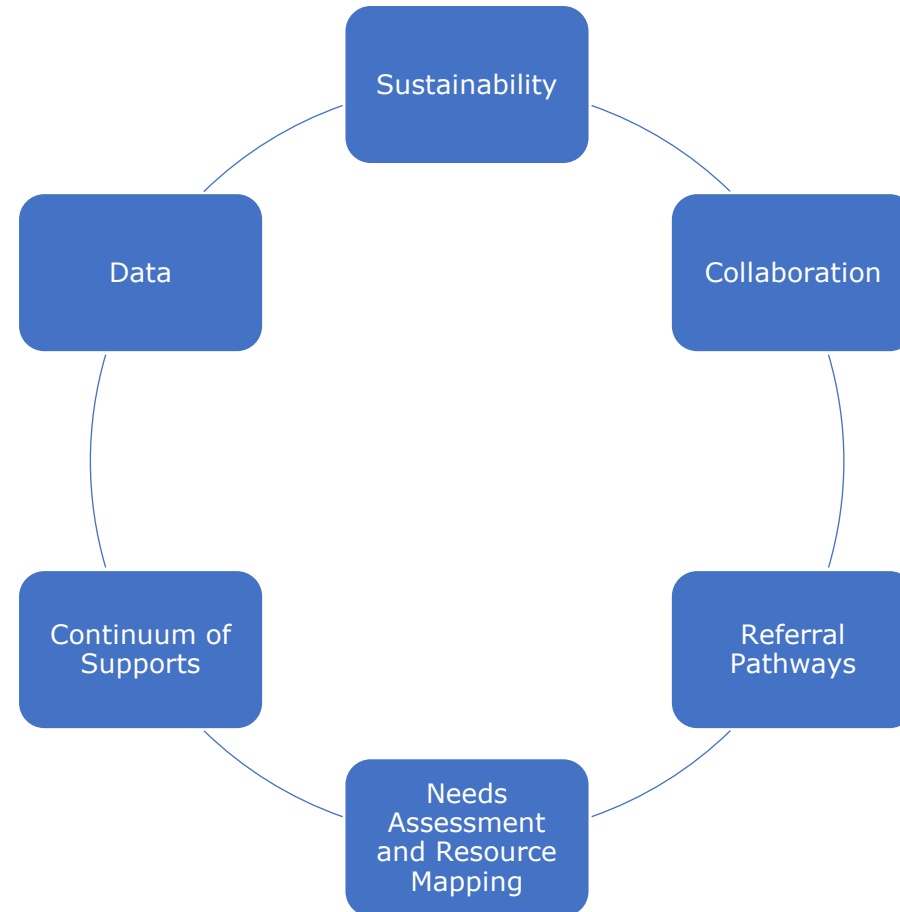
A bill to establish a student mental health apprenticeship retention and training (SMART) internship program

Intent is to create paid and educationally meaningful internships in school settings

31n(6) or 31o funds could be used to hire interns after completion



Michigan's School-Based Behavioral Health Framework





31n(6) Allocations and Deadlines to Expend Funds

[LINK to Table](#)

Fiscal Year (FY) (Oct. 1-Sept. 30)	<u>2018-2019</u>	<u>2019-2020</u>	<u>2020-2021</u>	<u>2021-2022</u>	<u>2022-2023</u>
Funds received*	10/01/2018 to 9/30/2019	10/01/2019 to 9/30/2020	10/01/2020 to 9/30/2021	10/01/2021 to 9/30/2022	10/1/2022 to 9/30/2023
1st fiscal year after*	10/01/2019 to 9/30/2020	10/01/2020 to 9/30/2021	10/01/2021 to 9/30/2022	10/01/2022 to 9/30/2023	10/1/2023 to 9/30/2024
2nd fiscal year after*	10/01/2020 to 9/30/2021	10/01/2021 to 9/30/2022	10/01/2022 to 9/30/2023	10/01/2023 to 9/30/2024	10/1/2024 to 9/30/2025
Letter of Intent extending deadline for FY 18-19 only	10/01/2021 to 9/30/2022				
31n6 allocation (adding direct service providers)	\$294,500	\$410,700	\$460,700 (original allocation) \$817,800 (March supplemental allocation)	\$575,000 base plus per pupil allocation (approximately \$3.83/student)	\$955,300 base plus per pupil allocation (approximately \$6.65/student)