

# INNOV★TE. INTEGR★TE. MOTIV★TE.

## Conference Program



Michigan School Business Officials  
20th Annual Facilities/Operations  
Director Conference & Expo

September 30 – October 2, 2018

Crystal Mountain Resort, Thompsonville

### Gold Sponsors



### Silver Sponsors

Aquatic Source, LLC  
Arete Technology  
Barton Malow Company  
Control Solutions  
Enviro-Clean Services, Inc.  
GMB Architecture + Engineering  
Kingscott Associates, Inc.  
KSS Enterprises/Hillyard  
Lansing Sanitary Supply, Inc.  
MWA Commercial Roofing Solutions  
Nichols  
PEA Inc.  
SET SEG  
Snider Recreation, Inc.  
Spartan Chemical Company  
The D.M. Burr Group

### Bronze Sponsors

ASSA ABLOY – Door Security Solutions North Shores  
Cutting Edge Sports Flooring  
Enerco Corporation  
Floor Care Concepts & Supply Co.  
Foster Specialty Floors  
Howley Agency Sales Company  
J+J Flooring Group  
Lochinvar Corp.  
Musco Sports Lighting LLC  
Nora Systems, Inc.  
Performance Engineering Group, Inc.  
Peter Basso Associates, Inc.  
Redford Lock Security Solutions  
River City Flooring / Armstrong Flooring, Inc.  
Tandus Centiva Inc.  
The Eisen Group  
Town Center Inc.

# General Conference Information

## Table of Contents

Sunday • September 30, 2018.....	3
Monday • October 1, 2018.....	3
Tuesday • October 2, 2018.....	6
Conference Sponsors.....	8
SCECH Validation Form.....	9
Exhibit Show Map & Directory.....	Inside Back Cover
Crystal Center • Conference Rooms.....	Back Cover

## Wifi Access

Password: tree

## Find Your Handouts Here

[bit.ly/facop-conf](http://bit.ly/facop-conf)

Access the mobile site for conference related information and handouts

## Scholarship Sponsors

Thank you to Consumers Energy Company, Gusco Energy and Young Supply Co. for their donations to the conference scholarship program.



## Facilities and Operations Director Certification Information

To receive credit for either the SCECHs or MSBO Voluntary Certification, you must be on time and stay until the end of the conference. No partial credit will be offered. Each session you attend must be identified/circled and initialed for each day on the SCECH Validation Form on page 9. Return the form to the MSBO registration desk before you leave. This conference qualifies for 3-11 SCECHs. By attending this conference, you can earn a total of 11 hours for MSBO Certification. These hours can be used for renewing or initial certification. For further information, contact the MSBO office at 517.327.5920 or e-mail [msbo@msbo.org](mailto:msbo@msbo.org).

## State Continuing Education Clock Hours (SCECHs)

3 – 11 SCECHs may be granted to each participant who qualifies, pending approval. Under MDE regulations, SCECHs are given based on your attendance at conference sessions and exhibit show. SCECHs are given pending final approval from MDE.

*ADVISORY: It is a criminal offense to use or attempt to use a State Continuing Education Clock Hours (SCECHs) transcript or certificate of completion that is fraudulently obtained, altered, or forged to obtain and/or maintain school administrator, teacher, and/or school psychologist certification or other State Board approval.*

## Save the Dates!

21st Annual Facilities/Operations Director Conference & Expo  
October 6 – 8, 2019  
Crystal Mountain Resort • Thompsonville

22nd Annual Facilities/Operations Director Conference & Expo  
September 27 – 29, 2020  
Crystal Mountain Resort • Thompsonville

## Door Prizes Thanks to the following companies for donating!

Carrier Corporation

Enerco Corporation

Great Lakes Supply Co.

J + J Flooring Group

KSS Enterprises

Lighting Supply Co.

MacAllister Rentals

MDC

Process Engineering & Equipment Company

Tandus Centiva Inc.

The D.M. Burr Group

The Eisen Group

Town Center Inc.

# Sunday • September 30, 2018

**5:30 – 7:00 pm**

## Welcoming Reception

*Special thanks to the following sponsors of the reception:*

- GMB Architecture + Engineering
- Lansing Sanitary Supply, Inc.
- MWA Commercial Roofing Solutions
- Nichols

# Monday • October 1, 2018

**7:00 – 7:50 am**

## Full Breakfast

**Room: Northwest Territories**

*Sponsored by: Aquatic Source, LLC and Spartan Chemical Company*

**7:50 – 8:20 am**

## Opening Session

**Room: Northwest Territories**

*Presenter(s): Scott Little and David Martell, MSBO*

**8:30 – 11:30 am**

## 1. Computerized Facility Management

**Room: Hudson Bay A**

Learn about the different options for computerization of the facility management functions, including: work order systems, utility tracking, preventative maintenance, space usage, and inventory.

*Presenter(s): Joshua Peach, Dude Solutions*

## 2. Maintenance Operations

**Room: Hudson Bay B**

An overview of maintenance operations, including: grounds, with a focus on preventative maintenance; scheduling and staffing; work order systems; and service contracts.

*Presenter(s): Todd Bell, Kentwood Public Schools and Don Hebel, Wyoming Public Schools*

**8:30 – 9:50 am**

## 3. Disinfection and Decontamination in a Dangerous World

**Room: Arctic Bay**

The world has become increasingly dangerous as a result of new strains of highly contagious and potentially lethal diseases. Learn proper disinfection procedures, as well as providing a guideline as to what procedures should be exercised. Learn required changes in procedures, frequencies and products, which vary depending on the level of infectious disease threat. Hear definitive answers to tough questions related to a school's response to an elevated awareness of the existence of infectious diseases in the community, or in the school itself.

*Presenter(s): Mark Warner, ISSA*

## 4. Communicating the Mission and Operation of Facilities

**Room: Vista**

Learn to leverage technology and electronic tools to better communicate to your customers, while also providing meaningful customer feedback data for your operation.

Discover how to target surveys and how to use that information to improve. Hear ways to collect and organize day-to-day management information to increase your efficiency.

*Presenter(s): Ronald Boezwinkle, Forest Hills Public Schools*

## 5. School Finance Update

**Room: Baker Lake**

Hear the latest state budget and school finance information from the Executive Director of MSBO. This is your chance to ask questions about where school finance really is right now and where it may be heading.

*Presenter(s): David Martell, MSBO*

## 6. Ensuring Playground Safety

**Room: Mountain View**

Properly inspecting playgrounds and documenting results can go a long way to ensuring students' safety. In the event someone does get hurt on your playgrounds, having the proper documentation of inspections and repairs could limit district liability. Learn the details on what needs to be inspected, how often, and how to properly document your efforts.

*Presenter(s): Mike Grosso, SET SEG*

# Monday • October 1, 2018

## 7. Making Performance Contracting a Success

**Room: Baffin Island**

Many districts still need to upgrade aging infrastructure making it more energy efficient and easier to maintain. Finding the money to make those upgrades is always a challenge. Performance contracting remains a viable approach to finance those upgrades. Learn how the process works, how savings are calculated, and how scope of work is determined; this knowledge can greatly increase your chances of having a very successful project.

*Presenter(s): W. George Taylor, ENGIE Services U.S.*

## 9:50 – 10:10 am

### Break

*Sponsored by: SET SEG, Snider Recreation, Inc. and The D.M. Burr Group*

## 10:10 – 11:30 am

## 8. Water Testing Protocols

**Room: Vista**

Hear from Michigan Department of Environmental Quality (MDEQ) regarding properly testing drinking water sources in your district. With all of the recent issues in our state with poor water quality, it is a good idea to understand how best to approach testing. MDEQ will explain best practices for testing and for understanding results, along with suggested mitigation, if there are issues.

*Presenter(s): Holly Gohlke, Michigan Department of Environmental Quality*

## 9. Green Revolving Fund: Your Facilities Savings Account

**Room: Baffin Island**

Implementing a Green Revolving Fund (GRF) allows a district to track and accumulate savings from energy efficiency projects. Learn how a GRF works within a K-12 district,

including the typical barriers and hiccups. Consumers Energy led a group of early GRF adopters through an initial project and the resulting case study outcomes will be presented. The session will also include other emerging opportunities and examples of energy efficiency initiatives for K-12 facilities throughout the state.

*Presenter(s): Martin Morgan, Consumers Energy Business Solutions and Jason Bing, Ann Arbor Public Schools*

## 10. Daytime Cleaning Can Work!

**Room: Arctic Bay**

Hear about Michigan districts that embarked on an experiment to move more cleaning (not all) to days. They ran this program over the entire school year with the goal being to increase retention of staff while maintaining costs. Both goals were met, along with an increase in job satisfaction from the change. Learn what this valuable program could bring to your district, including lessons learned to improve it for next year!

*Presenter(s): Kenneth Simon, Cedar Springs Public Schools and Karin Wysocki, GRBS, Inc.*

## 11. Leading vs. Managing

**Room: Mountain View**

A common thread among leadership definitions is the ability of a person to inspire others to achieve. Many of us are in leadership roles, but we see it just as managing people — not necessarily leading them. Good management skills are essential to success, but ultimately how we inspire and influence people will define our leadership. Learn important aspects of both leadership and management and how to embrace each effectively in our careers.

*Presenter(s): Ken Wertz and Paul Anastasi, Massachusetts Facilities Administrators Association*

## 12. The Environmental “Dirty 30”

**Room: Baker Lake**

Testing for lead and copper in water systems, monitoring underground storage tanks, and managing asbestos plans are just some of the areas where schools need to pay attention to reduce risk. Discover the latest updates on these and other issues, along with strategies to effectively handle the challenges.

*Presenter(s): Scott Staber, arch environmental group, inc.*

## 11:40 am – 12:15 pm

### Networking Luncheon with Exhibitors

**Room: Northwest Territories**

## 12:15 – 2:15 pm

### Exhibit Show

**Room: James Bay Hall — Lower Level**

## 2:30 – 5:30 pm

## 13. Custodial Operations

**Room: Hudson Bay A**

Understand custodial operations and learn best practices that focus on procedure manuals, scheduling and staffing, training, equipment and supplies, and service contracts.

*Presenter(s): Glen Huizenga, Nichols and Jeff Miller, Kent ISD*

## 14. Environmental Health and Safety

**Room: Hudson Bay B**

Major state and federal regulations and how they are blended with each other and their impact on facilities.

*Presenter(s): Scott Staber, arch environmental group, inc.*

# Monday • October 1, 2018

## 2:30 – 3:50 pm

### 15. Maintaining Gym and Other Wood Floors for Optimal Performance and Longevity

**Room: Baker Lake**

Gym, stage, and performing arts floors are used a great deal in schools and require appropriate attention to ensure a safe, attractive surface. Discover the real difference between oil and water based finishes and which one is most appropriate. Learn general maintenance processes that should always be employed, and what should be avoided, to ensure a long lasting floor.

*Presenter(s): Jordan Foster, Foster Specialty Floors*

### 16. Through the Window

**Room: Arctic Bay**

As all schools review the safety of their buildings regarding preventing intruders with harmful intent, one area to look at is windows, doors, and glass. There are a variety of glazings and glass available, but determining which is right for your application can be a challenge. Learn what all is available and the costs and applications of each.

*Presenter(s): Jeff Blackford, The Eisen Group*

### 17. Embracing Stress While Balancing Life

**Room: Mountain View**

Stress isn't always a bad thing. We need some stress in life to provide motivation for us to move forward. How we handle stress is key, however, to not allow it to become dangerous to our well-being. Learn techniques and strategies to approach stress in a healthy way that helps us do good work.

*Presenter(s): Ken Wertz and Paul Anastasi, Massachusetts Facilities Administrators Association*

### 18. The Future of Clean

**Room: Baffin Island**

Cleaning equipment and processes continue to evolve. Learn what's available now to make cleaning more efficient than ever, along with what's coming next.

*Presenter(s): Ed Stasiak, KSS Enterprises/Hillyard*

### 19. Utility Rates and Controlling Supply Costs

**Room: Vista**

Learn to better understand utility invoicing, along with what drives utility costs. Hear approaches for reducing your supply costs and usage through various purchasing and usage reduction strategies.

*Presenter(s): Jeff Clark, Michigan Schools Energy Cooperative and Tom Diliberti, Schneider Electric*

## 3:50 – 4:10 pm

### Break

*Sponsored by: SET SEG, Snider Recreation, Inc. and The D.M. Burr Group*

## 4:10 – 5:30 pm

### 20. Do We Have Enough?

**Room: Arctic Bay**

Most of us would say we don't have all we need to accomplish our mission at the level we desire. Certainly we've seen operational resources decline for quite some time, but how do we determine our actual level of resources (people, materials, etc.) and the impact on your district's mission? This should be a big question for every manager. Is it just a use of benchmarks or is there some way to quantitatively assess how much of something you need? Discover processes to help determine resource needs and how to explain to your customers your ability to deliver services based on the resources on hand.

*Presenter(s): Tim Ammon, School Bus Consultants, LLC*

### 21. Closing Buildings Properly

**Room: Vista**

If your district is considering closing and/or demolishing a building, you'll want to make sure you comply with various environmental and regulatory issues. Learn what all these items are and how best to ensure you do it all properly to prevent problems later.

*Presenter(s): Kary Amin, Nova Environmental, Inc.*

### 22. Cyber Security Applies to Facilities

**Room: Mountain View**

Facilities management has become increasingly reliant on technology. This has happened gradually over time and now it's time to review practices to keep all of this capacity secure. Consider building management systems, access control, security systems, cameras — just to name a few — and what would happen if someone intentionally accessed these systems to do harm. Learn strategies to employ to better strengthen your cyber security protocols to keep your buildings safe.

*Presenter(s): Steve Hoffman, Honeywell*

### 23. What's Up Dude?

**Room: Baffin Island**

Learn how to utilize SchoolDude systems to improve your ability to manage your district's operations. Additionally, hear the scope of current offerings, how they can assist you and what's planned for the future. Whether you just want to hear more, or you're a current subscriber, you'll learn more on how to use the features of the modules.

*Presenter(s): Joshua Peach, Dude Solutions*

# Monday • October 1, 2018

## 24. Best Practices for Cleaning in a Green & Sustainable Environment

**Room:** Baker Lake

The world is changing every day and our approach to cleaning needs to change with it. The key to success is fully understanding the history of Green cleaning, its current status, as well as the future of cleaning in a Green and Sustainable World. Discover the reasons for Green cleaning, from eliminating potentially toxic products from our world, to the enhanced performance of state-of-the-art Green cleaning products and procedures. Learn

the steps for implementing a successful Green cleaning program and fulfilling progressive Green initiatives.

*Presenter(s): Mark Warner, ISSA*

## 5:30 – 6:30 pm

### Reception on the Mountain Top

Ride the Crystal Clipper to the Reception. Bring Your Drink Tickets.

## 6:30 – 7:30 pm

### Buffet Dinner

**Room:** Northwest Territories

*Sponsored by: Kingscott Associates, Inc., KSS Enterprises/Hillyard and PEA Inc.*

## Other Monday Evening Events

Invitations to vendor sponsored hospitalities may be posted on a bulletin board at the MSBO registration desk.

# Tuesday • October 2, 2018

## 7:30 – 8:20 am

### Full Breakfast

**Room:** Northwest Territories

*Sponsored by: Arete Technology and Barton Malow Company*

## 8:30 – 11:30 am

## 25. Principles of Budgeting

**Room:** Hudson Bay A

Learn principles of school budgeting and explain methods of establishing and maintaining a facilities or an operations budget. Examine major budget pressures that schools face, the role of collective bargaining in the budget, and how the public can affect the local school budget.

*Presenter(s): Steven Lenar, Holly Area Schools*

## 26. Facility Planning Design and Construction

**Room:** Hudson Bay B

Learn the principles in the planning and designing of educational facilities; options in methods of construction management; selection of design and construction professionals; and the bonding process, including laws, bidding requirement and record keeping.

*Presenter(s): Robert Roop, Peter Basso Associates, Inc. and John Waldrop and Bill Weinrauch, TMP Architecture, Inc.*

## 8:30 – 9:50 am

## 27. Open Protocol HVAC Systems

**Room:** Arctic Bay

Many districts have product specific control systems for their building controls. This often requires that only the same proprietary equipment can be used to repair, replace, or upgrade systems. There are open protocol technologies, however, that can function with a variety of specific control systems, providing much more flexibility and cost savings. Learn how the newer generation of these technologies is changing the industry and how it may apply to your district.

*Presenter(s): Greg Doerr and Denny Moline, Hurst Mechanical, Inc.*

## 28. Energy Improvement Legislation

**Room:** Vista

Section 1274a of the Revised School Code authorizes schools to undertake energy improvement projects and finance them through a variety of methods. Recently, the Michigan Legislature modified this section to allow for "operational improvements." This language was a bit vague and has since been more defined, but still raises questions. Learn how this may affect future projects and how it can potentially allow for a larger scope of project utilizing a performance contract strategy.

*Presenter(s): Frederic Heidemann, Thrun Law Firm, P.C.*

# Tuesday • October 2, 2018

## 29. Bureau of Fire Services (BFS) Update

### Room: Mountain View

Hear the latest guidance from the BFS on a variety of school facilities topics. From lockout devices to building closures — you'll have a chance to hear timely information and ask questions.

*Presenter(s): Adam Dailede, Bureau of Fire Services*

## 30. Access Control

### Room: Baffin Island

From keys to card access, access control continues to evolve. Hear about the newest technologies available and how they may apply to your operation, along with ideas on the most effective practices for your current systems.

*Presenter(s): Justin Sherman and Eric McQuade, LaForce, Inc.*

## 31. After-Hours Use of Facilities: Cost Awareness and Cost Recovery

### Room: Baker Lake

The after-hours use of school facilities costs dollars and time across multiple departments. Learn how to determine the cost of your after-hours events, improve customer service without cutting services, build a strong cost-recovery program, and motivate multiple departments to join in the effort. Discover the critical issues to consider when creating facilities use contracts, plans, and rental prices, and strategies to build a business case for recovering more costs and incorporating tiered fee structures.

*Presenter(s): Joshua Peach, Dude Solutions*

## 9:50 – 10:10 am

### Break

*Sponsored by: SET SEG, Snider Recreation, Inc. and The D.M. Burr Group*

## 10:10 – 11:30 am

## 32. Impactful Communication

### Room: Arctic Bay

Learn to communicate with your team, your family, your world in ways that are meaningful and memorable. Better understand emotions, meaning and performance and how they all influence those around us.

*Presenter(s): Tim Cusack*

## 33. Prepare for the Next Phase (Retirement!)

### Room: Baffin Island

We are often so caught up in day-to-day responsibilities and pressures of the job that we forget to properly plan for the next phase in life.

Hopefully, everyone has some aspirations for a comfortable retirement, but we might not have the best plan. As school pensions continue to come under scrutiny, it will be more important than ever to help guide your own plan. Hear about retirement strategies that leverage pre-tax contribution plans, along with other investment ideas intended to help position you for a comfortable retirement.

*Presenter(s): Donald Koller and Steve Warner, VALIC*

## 34. Let's Talk About It!

### Room: Baker Lake

Join this facilitated round table discussion on best practices in school facilities management. Hear from colleagues on their challenges and successes and share yours. It's always beneficial to talk to peers to help think through issues. Rarely is an issue totally unique, but even if it is, discussing it with those in the business can often lead to solutions.

*Presenter(s): Tim Peraino, Kent ISD*

## 35. Innovation in Facilities Management

### Room: Mountain View

Wayne-Westland Community Schools Facilities Department has won multiple MSBO Meridian Awards for implementing a variety of innovative practices. Learn about their winning programs and how you can model these ideas, along with other approaches to their operation that you may find beneficial.

*Presenter(s): Tony Spisak, Geno Montayne and Matt Connolly, Wayne-Westland Community Schools*

## 36. Design-Build Process Comes to Schools

### Room: Vista

Learn what the new design-build enabling legislation in Michigan for the school market may mean for your future projects. You'll hear about the legislation and how it updates the school construction code. Additionally, you'll learn how you can use design-build and how it can help Michigan schools reduce construction costs while increasing quality and speed of delivery on projects.

*Presenter(s): Michael Livendale, Design-Build Institute of America Great Lakes Region and Performance Services*

## 11:30 am – 12:15 pm

### Lunch

### Room: Northwest Territories

*Sponsored by: Control Solutions and Enviro-Clean Services, Inc*

# Tuesday • October 2, 2018

**12:15 – 1:00 pm**



**Tim Cusack**  
**The Brain as the Bridge — Understanding Emotions, Meaning and Performance at work.**

**Room: Northwest Territories**

Tim Cusack will demonstrate the ‘social brain’ and remind us how powerful and contagious our work attitudes are. Each day that we show

up to work we have an opportunity to impact the world around us in positive ways and make a difference in people’s lives. Through humor and stories, backed by research, Tim will illustrate ways of taking risks, staying positive and healthy—physically, mentally, and emotionally—in high pressured environments.

Stay until the end for these giveaways:

- Smarter Coffee Maker – Use your phone to control
- Samsung Galaxy Watch
- Chefman Digital Air Fryer
- Amazon Echo Show
- Philips Hue White and Color Ambiance Smart Bulb Starter Kit – Use your phone to control

## Thank you to our conference sponsors!

### Gold Sponsors

**Consumers Energy**

*Count on Us*®



### Silver Sponsors

Aquatic Source, LLC

Arete Technology

Barton Malow Company

Control Solutions

Enviro-Clean Services, Inc.

GMB Architecture + Engineering

Kingscott Associates, Inc.

KSS Enterprises/Hillyard

Lansing Sanitary Supply, Inc.

MWA Commercial Roofing Solutions

Nichols

PEA Inc.

SET SEG

Snider Recreation, Inc.

Spartan Chemical Company

The D.M. Burr Group

### Bronze Sponsors

ASSA ABLLOY – Door Security Solutions North Shores

Cutting Edge Sports Flooring

Enerco Corporation

Floor Care Concepts & Supply Co.

Foster Specialty Floors

Howley Agency Sales Company

J+J Flooring Group

Lochinvar Corp.

Musco Sports Lighting LLC

Nora Systems, Inc.

Performance Engineering Group, Inc.

Peter Basso Associates, Inc.

Redford Lock Security Solutions

River City Flooring / Armstrong Flooring, Inc.

Tandus Centiva Inc.

The Eisen Group

Town Center Inc.



# MSBO SCECH VALIDATION FORM

## 2018 MSBO Facilities/Operations Director Conference • Sept. 30–Oct. 2, 2018 Crystal Mountain Resort, Thompsonville

MSBO ID # (if known) \_\_\_\_\_ Name \_\_\_\_\_

District \_\_\_\_\_ PIC\* \_\_\_\_\_

Email \_\_\_\_\_ Signature \_\_\_\_\_

Place this form in the designated box located at the registration table or at the last session. Failure to turn in this form prior to leaving the Conference may result in you receiving no SCECHs. **Each session you attend must be identified/circled below and initialed for each day. Add up all session hours and record in the applicable yellow boxes.**

Monday, 10/1/18 — Identify/Circle Attended Session(s)							
<input type="checkbox"/> Opening Session <b>.5 Hours</b>							
Certification Classes • 8:30 – 11:30 am Sessions <b>2.75 Hours:</b> 1 2							
8:30 – 9:50 am Sessions <b>1.3 Hours:</b> 3 4 5 6 7							
10:10 – 11:30 am Sessions <b>1.3 Hours:</b> 8 9 10 11 12							
Exhibit Show <b>0.25-2.0 Hours</b>	<b>Time In:</b> <i>(Required)</i>		<b>Time Out:</b> <i>(Required)</i>		<b>Total Show Hours:</b>		
Certification Classes • 2:30 – 5:30 pm Sessions: <b>2.75 Hours:</b> 13 14							
2:30 – 3:50 pm Sessions: <b>1.3 Hours:</b> 15 16 17 18 19							
4:10 – 5:30 pm Sessions: <b>1.3 Hours:</b> 20 21 22 23 24							
<b>Monday Hours:</b>					<b>Initial:</b>		
Tuesday, 10/2/18 — Identify/Circle Attended Session(s)							
Certification Classes • 8:30 – 11:30 am Sessions <b>2.75 Hours:</b> 25 26							
8:30 – 9:50 am Sessions <b>1.3 Hours:</b> 27 28 29 30 31							
10:10 – 11:30 am Sessions <b>1.3 Hours:</b> 32 33 34 35 36							
<input type="checkbox"/> Keynote Speaker <b>.75 Hours</b>							
<b>Tuesday Hours:</b>					<b>Initial:</b>		
<b>Total Hours:</b>					<b>Initial:</b>		

In order to receive SCECHs for this conference, the Michigan Online Education Certification System (MOECS) requires participants to complete an evaluation separate from MSBO. We ask that you complete the evaluation in 30 days to receive SCECHs. MSBO will also send an evaluation to continue to meet its member needs. Remember to complete and sign this form and place it in the designated box before you leave the Conference. SCECH forms received after October 2, 2018 are not eligible for SCECHs.

\* A personal identification code (PIC) is only needed if you have a Michigan Online Educator Certification System (MOECS) account or hold a certificate with the State of Michigan.

# LET'S HELP SCHOOLS SAVE ENERGY AND MONEY.

- School districts in Michigan have implemented energy efficiency upgrades
- Michigan schools have received more than \$15 million in energy efficiency rebates since 2009
- Michigan schools are expected to save more than \$200 million on energy costs over the lifetime of the improvements



**Consumers Energy for Business**  
**Let's do business. Together.**

Call us for more information at **800-805-0490**,  
or visit **[ConsumersEnergy.com/businessmatters](https://www.consumersenergy.com/businessmatters)**

**#CE4BIZ**

With years of experience and hundreds of projects under our belts, GUSCO Energy continues to provide the education market place with innovative LED and solar solutions.

As a commercial/industrial electrical contractor, design build ESCO and a LED and solar panel supplier, we're uniquely qualified to provide the K12 education market place with strategic energy solutions.

We've designed a bundled Solar and LED lighting package that allows schools to implement both a turn key solar field and a complete LED lighting solution with no money out of pocket using a Power Purchase Agreement. Implementing a solar field and new LED lighting for your campus is now a pain free process.



#### Our advantages

- Fixed energy cost over term of agreement
- No upfront costs
- We're responsible for the maintenance costs of the solar field



GUSCO Energy  
7825 W Central Ave Toledo, Ohio 43617 419-469-6790  
121 N Tecumseh St, Adrian, MI 49221



**Young Supply Co.**

# EFFICIENT BUILDING SOLUTIONS

WE STOCK THE BEST PRODUCT LINES AVAILABLE FOR YOUR FACILITY IN REFRIGERATION, HVAC, HYDRONICS, & FOOD SERVICE EQUIPMENT



Anchored by LG's industry-leading Multi V™ VRF series, LG offers complete end-to-end solutions that are perfectly suited for a number of commercial applications. From the unique benefits of the Multi V™ 5 that reduce system down time to the seamless integration of the LG MultiSITE™ controls platform, explore the innovative features of LG commercial systems that provide enhanced efficiency and control without sacrificing occupant comfort.



Rheem® offers a complete line of heavy- and light-duty commercial water heaters for all your facilities water heating needs. Our products feature the most diverse tank components in the industry. From glass-on-steel to stainless steel to polybutylene, Rheem Commercial tank and tankless water heaters can meet your hot water demand.



The one-of-a-kind ZoomLock flame-free refrigerant fittings are popular with HVACR contractors and technicians who are looking for more flexibility, safety and efficiency. The biggest benefit of that improved efficiency is more productivity and increased profit potential.



## 17 locations and a fleet of delivery trucks!

Ann Arbor - Brighton - Chesterfield - Detroit - Farmington - Flint  
Grand Rapids - Holland, MI - Holland, OH - Kalamazoo - Lansing  
Lincoln Park - Pontiac - Saginaw - Toledo - Traverse City - Troy

[www.youngsupply.com](http://www.youngsupply.com)





























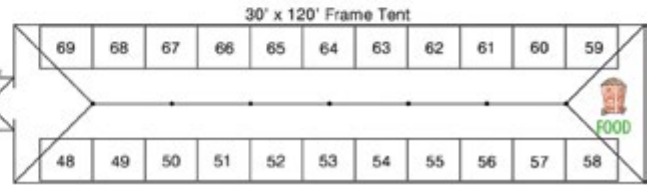




# Exhibit Show Map & Directory



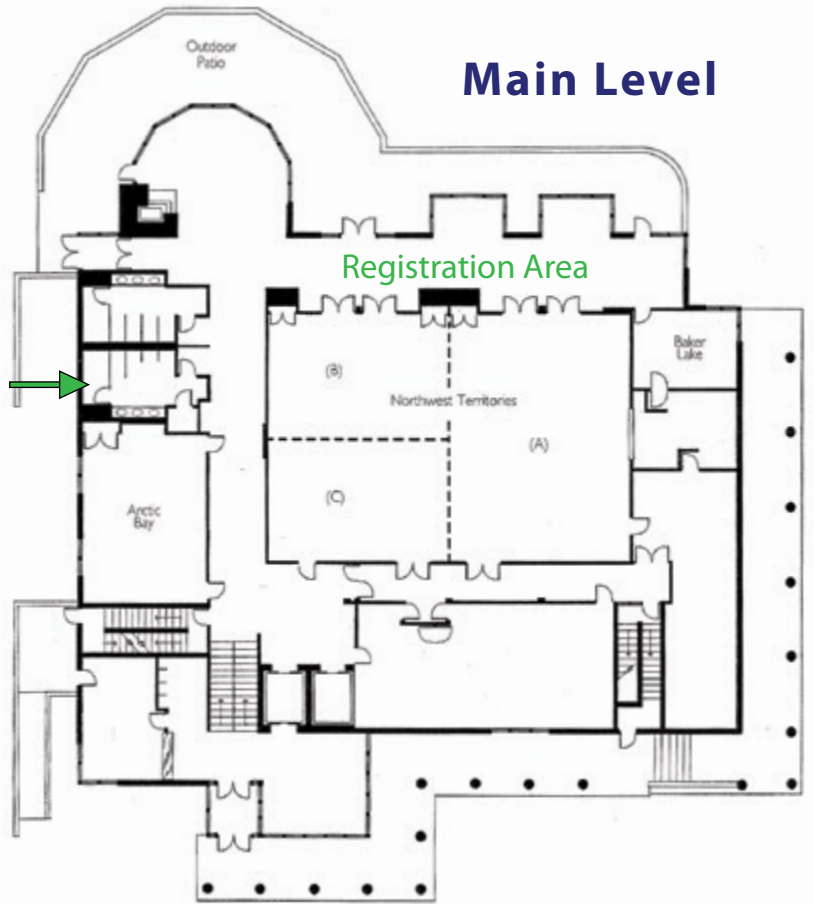
**James Bay Hall • Lower Level**  
**October 1, 2018 • 12:15 – 2:15 pm**



Company	Booth #	Company	Booth #	Company	Booth #
AkitaBox	64	Floor Care Concepts & Supply Co.	26	Partition Systems Inc.	T-7
Aquatic Source, LLC	5	Foresite Design, Inc.	57	PEA Inc.	3
arch environmental group, inc.	20	Foster Specialty Floors	21	Performance Engineering Group, Inc.	34
Arete Technology	35	French Associates, Inc.	40	Performance Services	39
ASSA ABLOY-Door Security Solutions North Shores	27	GMB Architecture + Engineering	24	Peter Basso Associates, Inc.	19
Barton Malow Company	4	GRBS, Inc.	48	Process Engineering & Equipment Company	T-3
Belfor Property Restoration	38	Great Lakes Supply Co.	T-11	R.L. Deppmann Co.	69
Biddergy.com	46	GUSCO Energy	2	Redford Lock Security Solutions	31
Bolhouse LLC	52	HeartAED/Aventric Technologies	37	Reeman Farm Equipment	Outside
Bryco Inc.	68	Howley Agency Sales Company	18	River City Flooring / Armstrong Flooring, Inc.	43
Buckeye International, Inc.	T-4	Interstate Restoration	T-10	SET SEG.	25
Carrier Corporation	58	J+J Flooring Group	32	Siemens Industry, Inc./Building Technologies	62
CLEARResult/Efficiency United	56	Kingscott Associates, Inc.	15	Snider Recreation, Inc.	9
Consumers Energy Company	11	KSS Enterprises/Hillyard	44	Spartan Chemical Company	7
Control Solutions	6	Kuhn Specialty Flooring	36	Star Flooring	T-5
CRS - Commercial Roofing Specialists	61	Lansing Sanitary Supply, Inc.	13	Strategic Energy Solutions, Inc.	33
CSO	59	Lighting Supply Co.	T-6	StructureTec	65
Cutting Edge Sports Flooring	42	Lochinvar Corp.	29	Systemair / Changeair	Outside
Dean Boiler Inc.	54	MacAllister Rentals	T-2	Tandus Centiva Inc.	41
Diversified Custodial & Maintenance	T-9	MDC	63	Tenurgy	T-8
Dude Solutions	22	Miracle Midwest	45	Testing Engineers & Consultants, Inc.	T-1
Duro-Last Roofing Inc.	67	Modernistic Cleaning & Restoration	60	The D.M. Burr Group	10
Ehresman Associates, Inc.	55	Musco Sports Lighting LLC	28	The Eisen Group	17
Electra Ltd.	53	MWA Commercial Roofing Solutions	12	The Skillman Corporation	49
Enerco Corporation	23	National Time & Signal Corp.	66	Town Center Inc.	30
Enviro-Clean Services, Inc.	8	Nichols	1	Wolverine Power Systems	47
EnviroSafe, Inc.	50	Nora Systems, Inc.	16	Young Supply Co.	14
		Optilumen (JAC Technology LLC)	51		

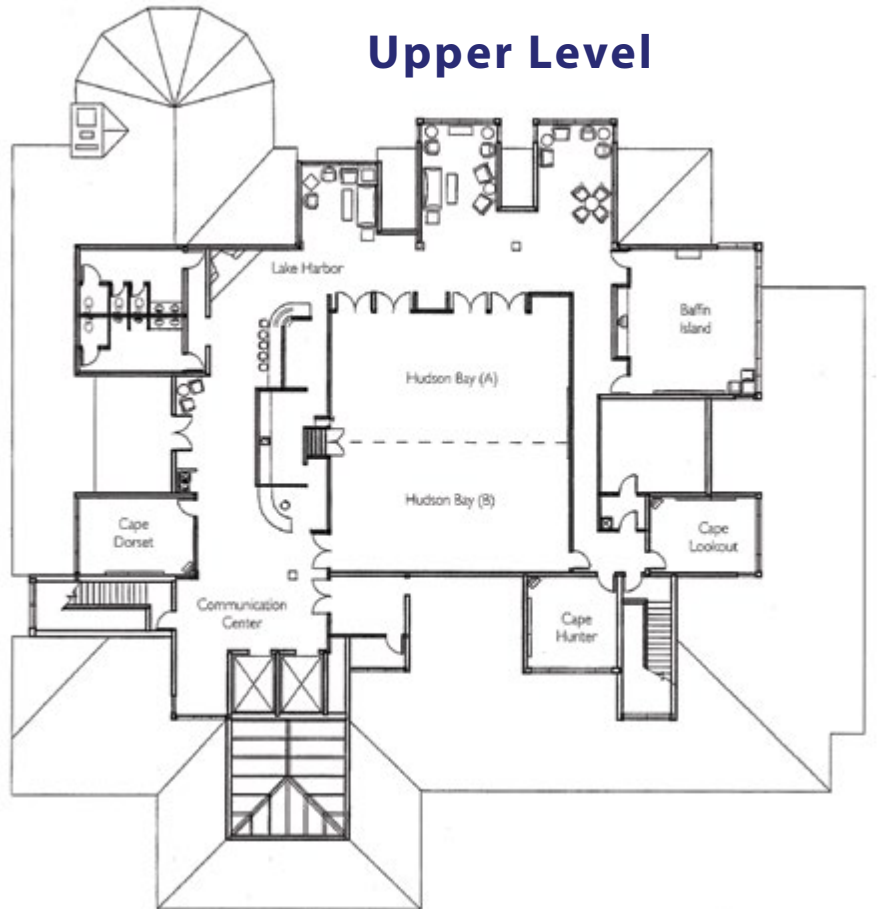
# Crystal Center • Conference Rooms

## Main Level



Front Entrance

## Upper Level



## Lodge Conference Rooms

